



Branscombe Square | | Southend-On-Sea | SS1 3QD

Guide Price £685,000

bear
Estate Agents

Branscombe Square | Southend-On-Sea | SS1 3QD Guide Price £685,000

Guide Price £685,000 - £700,000

Located in a highly sought-after area of Thorpe Bay, Essex, this charming 2-bedroom detached bungalow offers the perfect blend of modern living and convenient location. The property features a contemporary kitchen and bathroom, providing a stylish and functional space for everyday living. The spacious living areas offer a light and airy feel, ideal for entertaining.

Positioned on a desirable road within Thorpe Bay, the bungalow benefits from easy access to local amenities, transport links, and the beautiful seafront, making it an ideal choice for those seeking a well-connected lifestyle. The property also boasts a private garden, offering the perfect outdoor space to enjoy the sunshine.

- Detached Bungalow
- Two Double Bedrooms
- Modern Kitchen
- Walking Distance To Thorpe Bay Train Station
- Side Access
- Garage
- A Must View
- Off Street Parking
- Four Piece Bathroom Suite
- Integrated Kitchen Appliances

Exterior

Well-maintained exterior that combines practical design with attractive landscaping. A block-paved driveway leads up to the entrance, providing ample off-street parking, with the remainder of the front area laid to lawn. Mature shrubs add a touch of greenery and charm to the facade, and side access is conveniently available on both sides of the property, ensuring ease of movement.

Further features include separate garage, ideal for additional storage or secure parking. The rear garden is a true highlight, mostly laid to lawn and featuring a thoughtfully placed block-paved pathway that guides you through the space. Mature trees and well-established shrubs offer natural beauty and privacy, creating a tranquil, green retreat perfect for relaxation or outdoor gatherings.





Interior

UPVC front door, where natural light pours in through double-glazed windows.

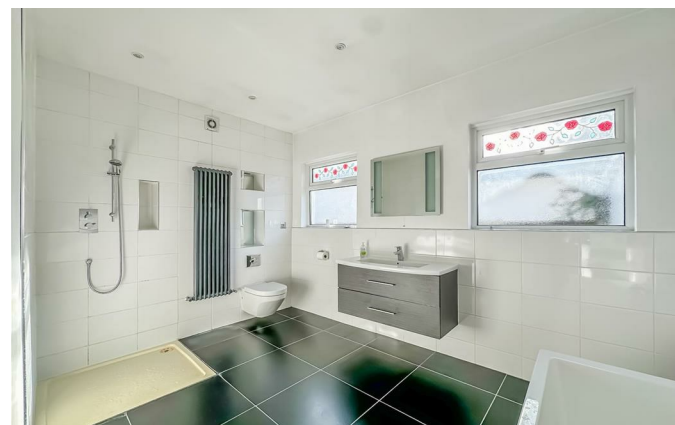
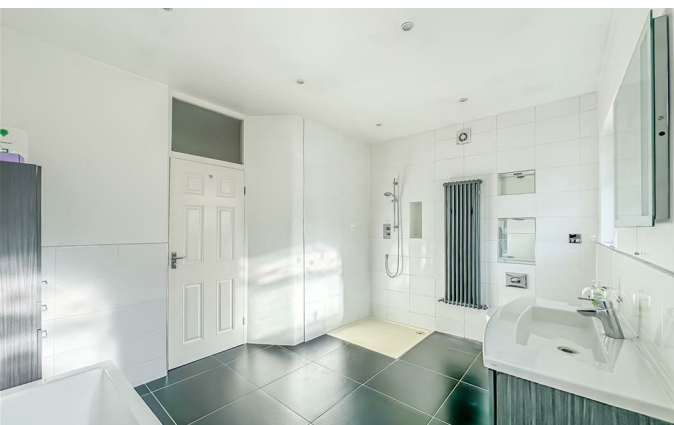
The hallway greets you with warm wooden flooring that flows seamlessly into the kitchen, adding both style and practicality. Bedrooms one and two, along with the lounge, are carpeted, offering a cozy and comfortable feel underfoot.

The bathroom features a sleek four-piece suite with tiled flooring, combining elegance with ease of maintenance. Additionally, there's a separate cloakroom with matching tiled floors, providing extra convenience for guests. This thoughtfully designed interior effortlessly combines comfort with quality finishes.

Agents Note

The vendor is yet to find.

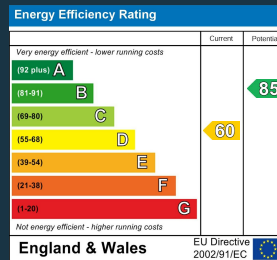
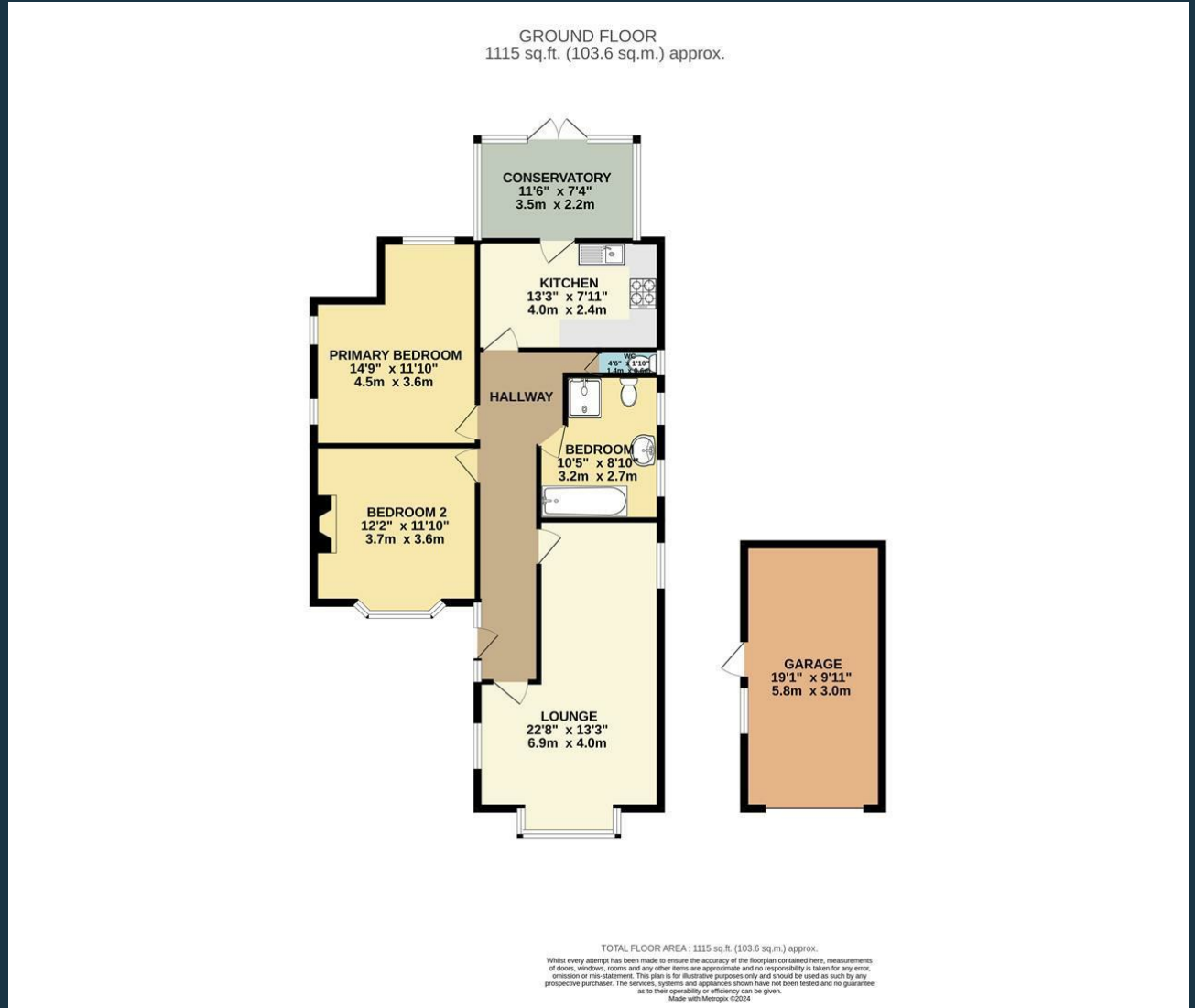
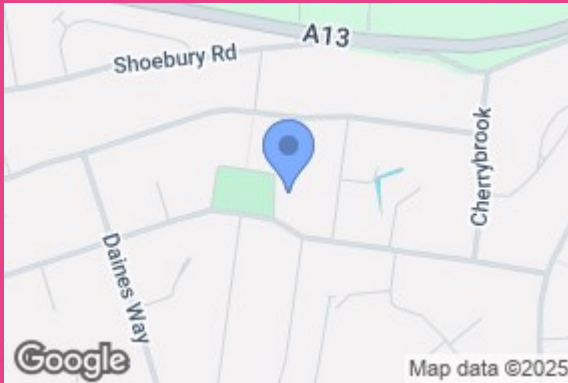
EPC ORDERED.



bear

Estate Agents





11 Main Road
Hockley
Essex
SS5 4QY
01702 416476
hockley@bearestateagents.co.uk
<https://www.bearestateagents.co.uk>